

Fisheries Liaison Plan updated

Forewind developed a Fisheries Liaison Plan in 2010 to present the organisation’s approach to liaison and consultation with the fishing industry during the development of the proposed offshore wind farm projects, including cable corridors and landfall sites.

This plan, which was drafted with input from the Fisheries Liaison Co-ordinators appointed to support Forewind’s consultation process, has now been updated and is available for download from www.forewind.co.uk.

The plan has been produced for fishing industry stakeholders and covers Forewind’s aims and objectives with regards to fisheries liaison. It summarises the approach, outlines the different roles involved and how they interact, and includes a current evaluation of fishing efforts.

The document will evolve to accommodate geographical and temporal changes in fishing activity and so it sets out the

initial framework for liaison. Impacts on the fishing industry will differ with the various phases of development, and this newsletter will be a key communication tool as each project moves from planning into construction and operation. There will be continuous engagement and dialogue throughout.

Forewind will endeavour to ensure that all sectors of the fishing industry operating within the offshore development zone and the cable corridor are consulted on proposed activities as early as possible. The engagement objectives are to:

- Understand any potential concerns
- Provide necessary information to fisheries stakeholders to allow them to work safely
- Maintain a productive working relationship with all fisheries stakeholders
- Identify sources of information that will contribute to environmental impact assessments
- Comply with existing guidelines with respect to fisheries liaison

Fisheries liaison roles defined



Forewind has contracted two skilled Fisheries Liaison Coordinators, both with considerable experience of the North Sea fishing industry. The task of fisheries coordination has been divided into two functions, therefore:

- Precision Marine Survey Limited will be responsible for the cable corridor, and
- Brown & May Marine Limited will be responsible for the wind farm zone.

The FLCs will undertake the commercial fisheries environmental impact assessments for their respective areas, whilst supporting Forewind in liaising with the fishing industry and national and

international regulatory bodies. The FLCs work closely with Forewind and regularly consult representatives from the UK, Dutch, Danish, Norwegian, Swedish, German, French and Belgian fishing communities. Forewind’s fisheries liaison team is:

Nigel Proctor
Fisheries Liaison Coordinator - cable corridor
+44 7702 730 891
n.proctor@precisionmarine.co.uk

Stephen Appleby
Fisheries Liaison Coordinator - wind farm zone
+44 7887 777 001
sja@brownmay.com

Martin Goff
Offshore Project Developer
+44 7867 355935
martin.goff@forewind.co.uk

Melissa Read
Consent and Stakeholder Manager
+44 7818 597851
melissa.read@forewind.co.uk

Andrew Guyton
Consent and Stakeholder Manager
+44 7818 597849
andrew.guyton@forewind.co.uk



Forewind believes co-existence is achievable on Dogger Bank.

Co-existence is the aim

Since its inception, Forewind has adopted the approach that co-existence - operating side by side - is both desirable and achievable for the fishing industry and offshore wind farm development at Dogger Bank. Forewind does not intend to apply for restrictions on fishing activity within the wind farm areas post-construction.

Offshore Project Developer, Martin Goff says that the most sustainable way to achieve this is to avoid where possible, and otherwise reduce, any potential impacts. This is only possible if we maintain open and honest engagement with each other.

“We recognise that mitigation may be required in some circumstances and a successful mitigation strategy will require open and continuous communication between us and the fishing industry.”

Mitigation will be addressed if or when it is required. Forewind’s fisheries liaison team is open to feedback on how best to continue its engagement with the industry and achieve the aim of co-existence.

Freepost RSLY-HKGG-HEBR
Forewind
Davidson House
Forbury Square
Reading
RG1 3EU

Email: info@forewind.co.uk
Freephone: 0800 975 5636

forewind.co.uk

Fisheries Update 1

Introduction to the Dogger Bank Zone

The largest of The Crown Estate’s Round 3 offshore wind farm zones is the **Dogger Bank Zone in the North Sea, between 125 and 290 kilometres off the UK coast. It extends over approximately 8660km² and is roughly the size of North Yorkshire.**

Dogger Bank is being developed by Forewind, a consortium comprising four leading international energy companies – RWE, SSE, Statkraft and Statoil. Forewind is committed to securing all the necessary consents required for the development and construction of 9GW offshore wind capacity.

If fully realised Dogger Bank will be the largest offshore wind development in the world and could supply up to 10 per cent of the UK’s electricity. There are potentially tens of thousands of jobs in the fabrication of the components needed as well as in the construction of the wind farms themselves. People with an affinity for the sea may be well placed for roles on personnel transfer vessels, guard vessels, or in offshore operations and maintenance

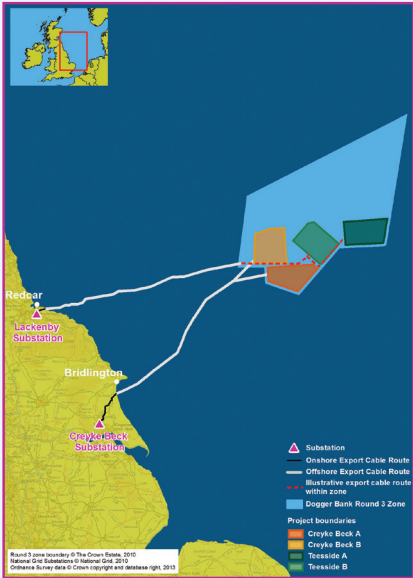
The development of Dogger Bank, and other Round 3 wind farms will help the UK to become more self-sufficient and rely less heavily on overseas sources for its energy.

The zone is too large to be developed at once so a phased approach has been implemented. Using data collected through

offshore surveys, the zone was refined and to date the boundaries for four wind farms have been identified. Each has a secured grid connection capacity of 1GW but a capacity of up to 1.2GW to maximise efficiency.

- Dogger Bank Creyke Beck is the first stage of development. It will have an installed capacity of up to 2.4GW and will connect into the existing Creyke Beck substation near Cottingham, in the East Riding of Yorkshire. It will comprise **Dogger Bank Creyke Beck A**, which is 515km² and **Dogger Bank Creyke Beck B** that is 599km². Both are 131 kilometres from shore at their closest point.
- Dogger Bank Teesside is Forewind’s second stage of development. This stage will comprise up to four wind farms expected to connect to the national grid at two separate points in Teesside. The first two wind farms are the 560km² **Dogger Bank Teesside A**, with its closest point from UK shore at 196km, and **Dogger Bank Teesside B**, which is 593km² and 165km from shore at its closest point. Boundaries for two further wind farms will be identified at a later date.

Meaningful and effective stakeholder engagement is key to the development of Dogger Bank, and Forewind will continue to consult with all relevant stakeholders, including the regional, national and international commercial fishing industries, throughout the process.



Newsletter for the fishing industry

Welcome to the first edition of Forewind’s Fisheries Update – a newsletter for the commercial fishing industry. To be published regularly, the newsletter will update the industry on key issues and relevant news about the Dogger Bank offshore wind development.

This first edition includes the announcement of the second and final phase of consultation for Dogger Bank Creyke Beck. The consultation is from 19 April 2013 until 11 June 2013, and we encourage all fishermen to view the documents, attend an event and feedback their comments.

Further editions of the Fisheries Update will be produced to coincide with milestone dates in the development and consenting calendar. For more information on Forewind and the Dogger Bank development, or to receive this newsletter electronically, please visit www.forewind.co.uk or email info@forewind.co.uk.

forewind.co.uk

Baseline established for Dogger Bank Creyke Beck

A commercial fisheries baseline has now been established for the Dogger Bank Creyke Beck development.

A wide range of data was collected and analysed from numerous sources including:

- Marine Management Organisation, MMO (UK)
- National Federation of Fishermen's Organisations (NFFO)
- Landbouw Economisch Instituut (Netherlands)
- Institute for Marine Resources and Ecosystem Studies (Netherlands)
- Ministeriet for Fødevarer, Landbrug og Fiskeri (Denmark)
- Bundesanstalt fur Landwirtschaft und Ernährung (Germany)
- Instituut voor Landbouw en Visserijonderzoek (Belgium)
- Comité National des Pêches Maritimes et des Elevages Marins (France)
- Institut Francais de Recherche pour l'Exploitation de la Mer (France)
- Havs och Vatten Myndigheten (Sweden)
- Fiskeridirektoratet (Norway)
- Inshore Fisheries and Conservation Authorities (UK)
- Seafish/Cefas Environmentally Responsible Fisheries Project (UK)
- individual fishermen and their representatives.



Vessels from a number of countries are active on Dogger Bank.



Surveillance sightings have been collected by the MMO as a means of fisheries protection and enforcement. This data includes all fishing vessels regardless of size and nationality, and shows the relative distribution of fishing activity by method and nationality. However it cannot be quantitatively assessed due to the frequency of surveillance over-flights, which are generally only during daylight hours.

Some countries have provided statistics relating to both the catch and effort. These datasets include landings, by value and/or weight, and effort, by hours or days fished, and were collected by the International Council for the Exploration of the Sea's (ICES) rectangle based sample strategy with the exception of the Norwegian dataset, which has been collected by Norwegian Sea Area.

Satellite Tracking Vessel Monitoring System (VMS) data - the most accurate method to define the spatial distribution and relative density of fishing activity for vessels more than 15m in length - was also supplied by a number of nations.

Analysis of these datasets showed that vessels from the UK, Netherlands, Denmark, Belgium, Sweden and Norway were all active in the Dogger Bank Creyke Beck wind farm area. These vessels employed a range of fishing methods to catch a variety of species. The data has also shown that vessels registered in the UK, France, Belgium, Germany, Norway, Sweden and Denmark have all been recorded fishing within the export cable route corridor.

Within Dogger Bank Creyke Beck A and B, the main fisheries identified were:

- Beam and otter trawling for mixed demersal species (UK and Dutch)
- Trawling for sandeels (Norwegian, Danish, Swedish, German and UK)
- Seine netting for mixed demersal species (UK and Danish)

Along the export cable route, the main fisheries identified were:

- Demersal trawling for mixed demersal species (UK, Dutch, Belgian and French)
- Midwater trawling for herring (Belgian, French and German)
- Trawling for sandeels (Norwegian, Danish, Swedish, German and UK)
- Scallop dredging (UK)
- Potting for crab and lobster (UK)
- Net fishing for mixed species (UK)

Impacts on each of the identified fisheries have been categorised for the whole life-cycle of the wind farm developments. Over this period, and post-mitigation, all the impacts were deemed minor or not significant other than those on the crab and lobster fishery and seine net fishery, which will be moderately impacted. Of those two fisheries, the overall effect on the crab and lobster fishery has been calculated to be low.

Full details of this can be found in the Commercial Fisheries chapter of the draft Environmental Statement (chapter 15) and Forewind would urge all those with an interest to read and feedback their comments as part of the current consultation phase which ends on **Tuesday, June 11**.

Meetings are ongoing and the fisheries liaison team continue to meet with relevant stakeholders from all regions and countries to discuss the outputs of the environmental impact assessment for Dogger Bank Creyke Beck and potential mitigation measures.

Responses can be submitted in person at the public exhibitions, by email, to our Freepost address or by calling us on the Freephone number on the back page. Electronic feedback forms are also available on www.forewind.co.uk.

Fisheries consultation continues

Face to face consultation is an invaluable part of Forewind's consultation approach and over the past 30 months, a series of consultation meetings have been held with national fisheries agencies, national fishermen's federations, regional and local organisations and associations and individual fishermen from: England, Scotland, The Netherlands, Belgium, Denmark, Sweden, France and Norway.

To date this year, Forewind and its representatives have met with:

- National Federation of Fishermen's Organisations (NFFO)
- VisNed representing the Dutch / Anglo-Dutch fishing industry
- Swedish Fishermen's Federation (SFF)
- Norwegian Fishermen's Association (NFA)
- Danish Fishermen's Association (DFA)

Dogger Bank fisheries working group proposed

Feedback from the recent fisheries consultation meetings included a suggestion to establish a Dogger Bank fisheries working group to bring all relevant fisheries representatives together for joint meetings.

The aim would be for this group to continue before, during and after the construction of the wind farms.

Having experienced positive results from its Dogger Bank Creyke Beck Converter Station Working Group, Forewind was encouraged by the fishing industry's proposal for the working group, as well as the consultation responses in general. The intention is now to reach a statement of common ground.



The proposed Dogger Bank Fisheries Working Group would aim to continue during and after wind farm construction.

- Comité National des Pêches Maritimes et des Elevages Marins (CRPMEM), and
- Instituut voor Landbouw en Visserijonderzoek.

Presentations were given to those attending and then questions taken to address any issues or concerns.

Meetings that are scheduled to take place, or will be arranged in the coming months will include those with the: Holderness Coast Fishing Industry Group (HCFIG); Scarborough Inshore Fishermen's Society; Bridlington and Flamborough Fishermen's Society; Hornsea fishermen; Withernsea fishermen; and Deutscher Fischerei Verband (DFV) representing the German fishing industry.

All commercial fisheries stakeholders, particularly those in the UK, are also encouraged to attend one of the planned public exhibitions in early May (Tuesday 7 to Sunday 12) that will be held as part of the Dogger Bank Creyke Beck phase two consultation.

Six events will take place in locations at Ulrome, Cottingham, Bridlington, Beeford, Hull and Beverly and exact venues, dates and times are available



Forewind's two meteorological masts to be installed by the Brave Tern.

on the Forewind website. Meetings to be held specifically with regional fishing groups will also be arranged to tie in with the public event dates.

Fisheries related stakeholders are welcome to contact the fisheries liaison team at any time to arrange additional meetings or discuss the upcoming consultation.

Offshore activity planned for 2013

Forewind has been active on Dogger Bank since 2010, with survey and met mast installation work continuing throughout 2013.

Current planned survey or construction works for the year are:

Date (2013):	Activity:	Location:
January to April	Met mast installation	Tranche A and B
March	Fish ecology survey	nearshore Teesside landfall
April	Fish ecology survey	offshore Dogger Bank Zone
	Marine traffic survey	Tranche B
April to May	Geophysical survey	offshore Dogger Bank Zone
May to June	Benthic surveys	offshore Dogger Bank Zone
July	Fish ecology survey	offshore Dogger Bank Zone
October	Fish ecology survey	offshore Dogger Bank Zone

The appointed Fisheries Liaison Coordinators will be providing regular updates to these planned works but can be contacted at any time with queries.